

IMMEDIATE RELEASE



New TEXpress Ramps on NTE and Signage Updates to LBJ

MEDIA CONTACT:

Tommy Williamson
Assistant Public Relations Manager
Phone (817) 914-0543
twilliamson@ferrovial.us
www.northtarrantexpress.com

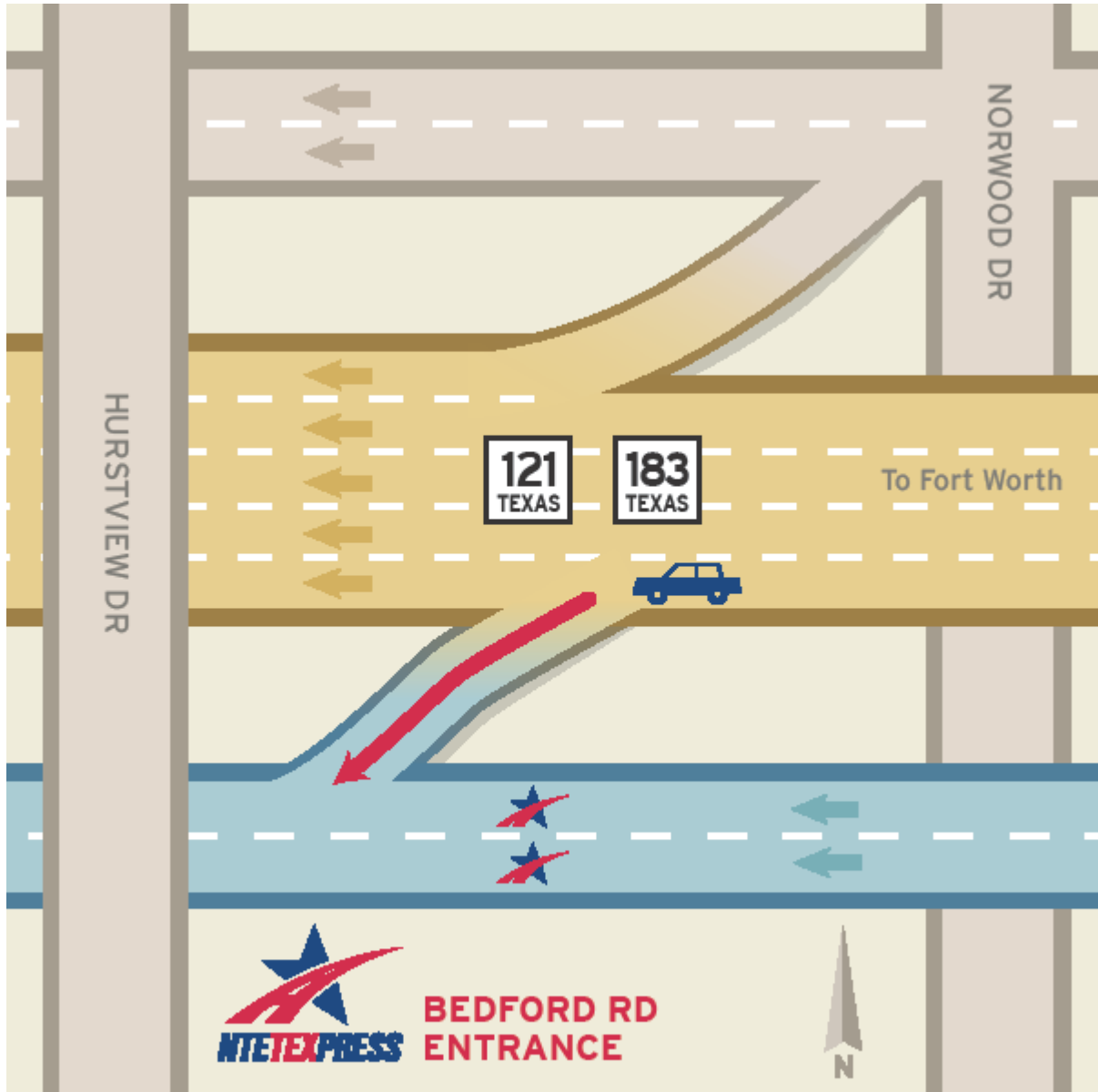
Fort Worth, Texas (April 27, 2017) – The new TEXpress Lanes entrance ramp at Bedford Road opens to drivers on Friday, April 28 and will be on the westbound side of SH-121/183. This is one of the new TEXpress Lanes ramps that has been added along the SH-121/183 corridor. The new TEXpress exit ramp will open on Tuesday, May 2 and will be located on the eastbound side of SH-121/183.

The North Tarrant Express (NTE) began construction to add the new TEXpress entrance and exit ramps in early October of 2016. The decision to add the new ramps was based off traffic pattern research conducted by traffic engineers and observers since the opening of the North Tarrant Express in 2014.

With the addition of the new Bedford Road ramps, drivers will have better access to and from the NTE TEXpress Lanes from the general highway lanes. The new ramps will improve mobility and further alleviate congestion in the Hurstview area along SH-121/183.

The new TEXpress ramps at Bedford Road are opening one month ahead of schedule. The construction was anticipated to take eight months to complete.

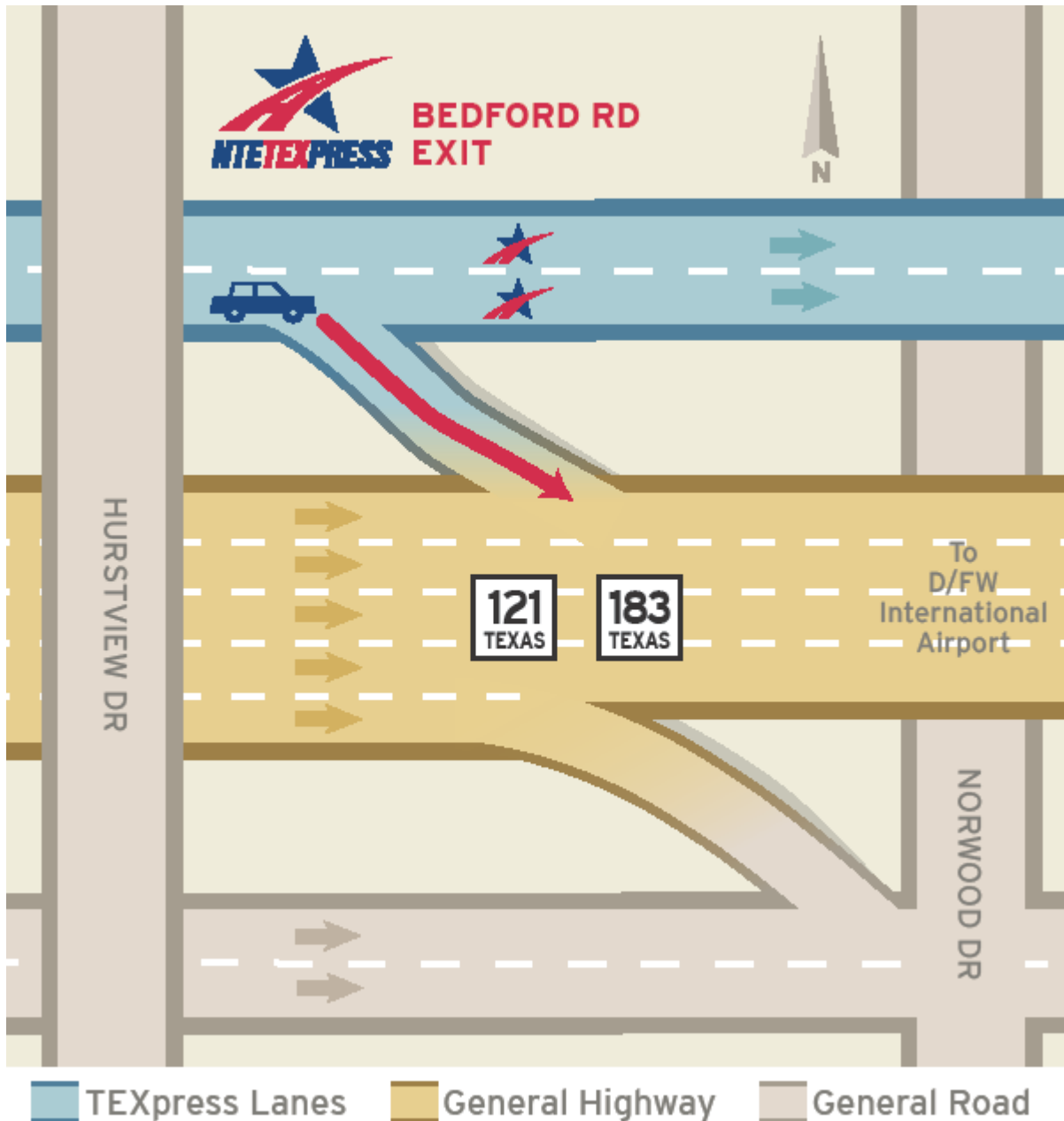




TEXpress Lanes

 General Highway

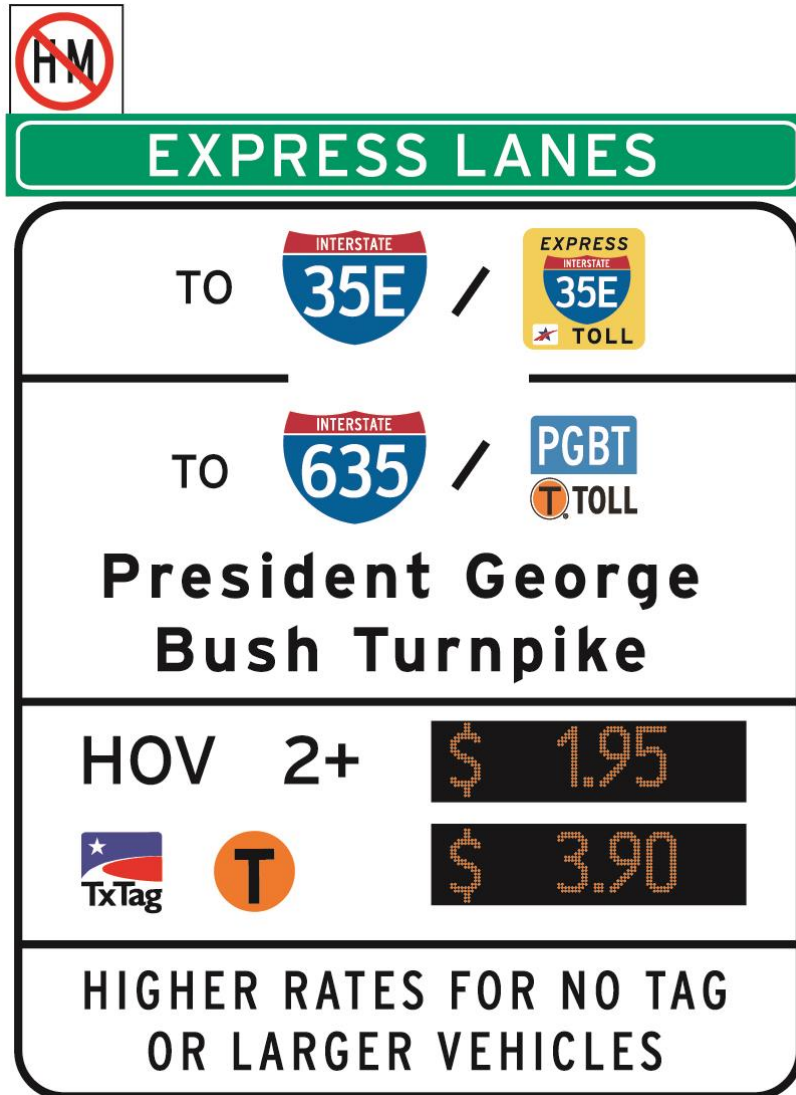
 General Road



In addition to the new ramp openings on NTE, the LBJ Express will replace HOV/SOV signage this weekend. Operations and maintenance crews will replace signage to comply with TxDOT's updated managed lanes signage standards. Overnight rolling closures on I-635 will begin on Friday, April 28 at 9 p.m. and last through early Saturday morning, April 29, while 21 signs are installed throughout the corridor.

Drivers on I-635 should be aware of the revised sign formatting: The current TEXpress Lanes signs display the single-occupancy vehicle rate above the HOV rate. The new signs will list the HOV rate first. A

sample of the new sign is below; the HOV rate in the sample sign is listed as “\$1.95,” but is only for example purposes.



For more information on LBJ Express and the North Tarrant Express, visit <http://www.lbjtexpress.com/> or <http://www.ntetexpress.com>. Drivers can find helpful maps, driving videos and special, promotional information on these websites or by following social media Twitter (@LBJExpress or @NTExpress) and Facebook (<https://www.facebook.com/thelbjexpress/>) or (<https://www.facebook.com/northtarrantexpress/>)

ABOUT THE NORTH TARRANT EXPRESS

The \$2.1 billion North Tarrant Express project, which began in 2010 and was completed in October 2015, included the reconstruction of expanded frontage lanes and main lanes, as well as the addition of bypass lanes and TEXpress managed lanes along IH 820 and SH 121/183 between 35W in Fort Worth and Industrial Boulevard (FM 156) in Euless. This expansive reconstruction project is successfully alleviating traffic congestion along one of the busiest highway corridors in the North Texas and the state, with as many as 200,000 cars traveling the stretch daily.

ABOUT THE LBJ EXPRESS

The \$2.6 billion LBJ Express project, which began in 2011 and was completed in September 2015, included the reconstruction of expanded frontage lanes and main lanes, as well as the addition of bypass lanes and TEXpress managed lanes along IH 635 between Luna Rd. and Greenville Ave. and IH 35E between Loop 12 and Valley View Ln. in Dallas. This expansive reconstruction project is successfully alleviating traffic congestion along one of the busiest highway corridors in the state, with as many as 250,000 cars traveling the stretch daily. In 2016, the project was one of five finalists for the American Association State and Highway Transportation Officials' Best Use of Innovation Award.

###